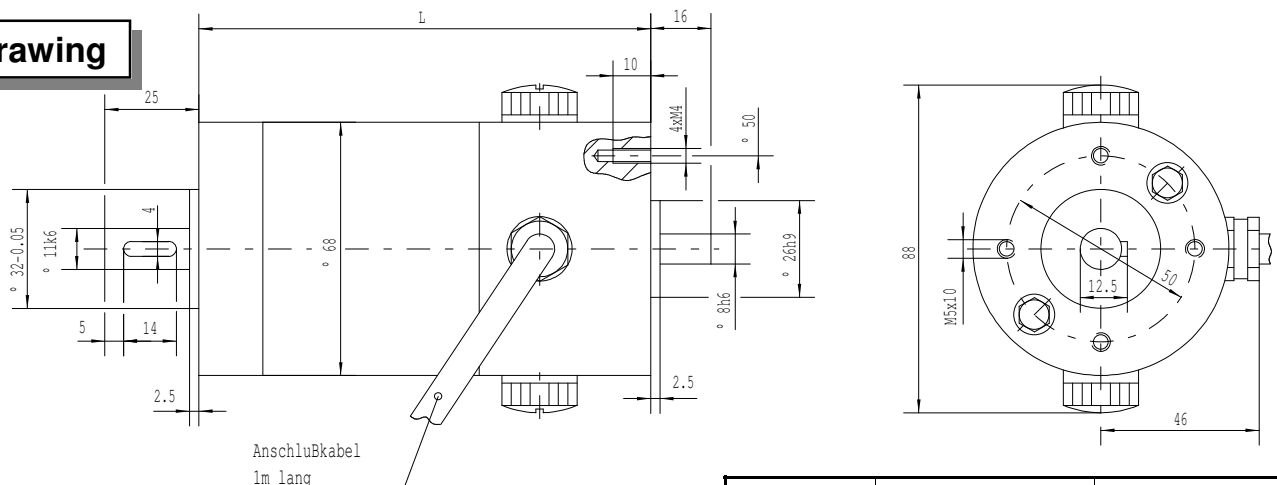


## Technical Data

Typ	Type	Type		GM 68K	GM68 M	GM 68 L
Nennleistung (S1-Betr.)	Power rated (S1)	Puissance nominale (S1)	W	100	130	170
Nennspannung	Rated voltage	Tension nominale	V	48	48	48
Nenn Drehmoment	Rated torque	Couple nominale	Nm	0.33	0.42	0.54
Spitzendrehmoment	Peak torque	Couple cretre	Nm	0.99	1.26	1.62
Nenn Drehzahl	Rated speed	Vitesse nominale	min <sup>-1</sup>	3000	3000	3000
Max. Drehzahl	Max. speed	Vitesse maxi	min <sup>-1</sup>	4000	4000	4000
Nennstrom	Rated current	Courant nominale	A	3.0	4.3	5.4
Spitzenstrom	Peak current	Courant maxi	A	9.0	12.9	16.2
Spannungskonstante	Voltage constant	Constante de tension	V/1000min <sup>-1</sup>	13.7	13.1	13.4
Drehmomentkonstante	Torque constant	Constante de couple	Nm/A	0.11	0.1046	0.1129
Elektr. Zeitkonstante	Electr. time constant	Const. de temps electr.	ms	2.9	2.56	2.9
Mech. Zeitkonstante	Mech. time constant	Const. de temps mec.	ms	20.4	18.0	13.5
Therm. Zeitkonstante	Therm. time constant	Const. de temps therm.	min	16	20	24
Ankerträgheitsmoment	Rotor inertia moment	Inertie rotor	Kgm <sup>2</sup> x10 <sup>-3</sup>	0.073	0.091	0.11
Ankerinduktivität	Armature inductance	Inducatance rotor	mH	9.7	7.05	4.4
Ankerwiderstand	Armature resistance	Resistance rotor	Ohm	3.17	1.74	1.26
Anschlusswiderstand	Connection resistance	Resistance aux bornes	Ohm	3.4	2.0	1.49
Bremsspannung	Brake rated voltage	Frein tension nominale	VDC	24	24	24
Bremsmoment	Brake tourque	Frane couple de mainteine	Nm	0.75	0.75	0.75
Gewicht ohne Bremse	Weight without brake	Poidds sains frein	Kg	1.7	2.0	2.4
Gewicht mit Bremse	Weight with brake	Poidds avec frein	Kg	1.9	2.2	2.6

## Drawing

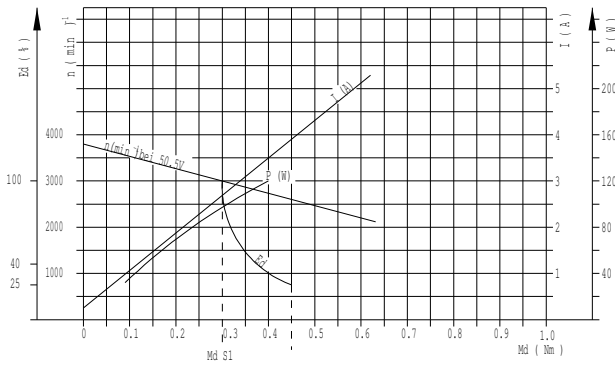


Voltage supply and controlling of the brake takes place via a separate connection cable.

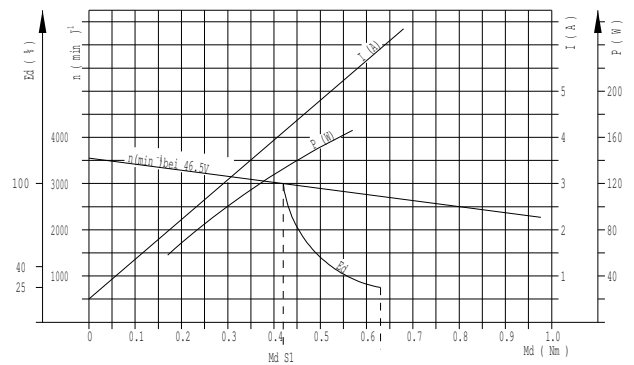
	Lenght without Brake	Lenght with Brake
GM 68 K	130	173.5
GM 68 M	150	193.5
GM 68 L	165	208.5

## Speed-Torque Characteristic

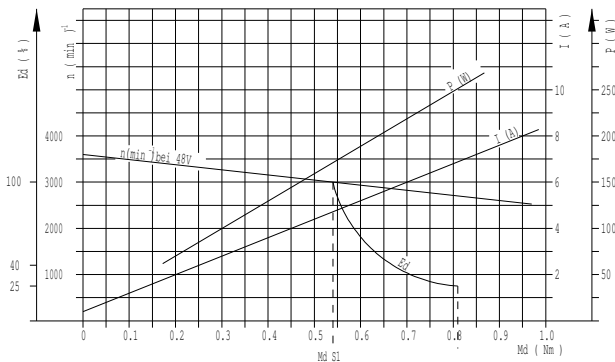
### GM 68 K



### GM 68 M



### GM 68 L



### Remark

All tolerances of the technical data are given according to VDE 0530. For all figures not given according to VDE 0530 there is a tolerance of  $\pm 10\%$ . With versions built to protection class IP54, a minimal lower torque can be expected due to the installation of shaft packing which causes increased friction.

The technical data given in the table and performance curve refer to a direct-current supply with a valid harmonic content of up to 5%.

The data applies to application in an ambient temperature from 0 to 40 degree Celsius.

This temperature range must not be undershot nor exceeded; otherwise an irreversible debilitation of the magnet might be possible.

Technical modifications reserved

Kern GmbH  
Antriebstechnik

Gutenbergstraße 11  
88046 Friedrichshafen

Tel.: (+49) 07541-5016-0  
Fax.: (+49) 07541-5016-28