



# Single Stage Worm Gears MH and MG Series

## Type Overview

Typ Type Type	Untersetzung $i=$ Transmission ratio $i=$ Rapport de reduction $i=$	Abtriebsmoment Permissible torque Couple admissible	Wirkungsgrad Efficiency Rendement
0/1 MH	6 - 72	max. 4 Nm	0.65 - 0.36
0/1 MG	6 - 72	max. 4 Nm	0.65 - 0.36
1/1 MH	5 - 100	max. 8 Nm	0.73 - 0.35
1/1 MG	5 - 100	max. 8 Nm	0.73 - 0.35
2/1 MH	5 - 100	max. 30 Nm	0.68 - 0.40
2/1 MG	5 - 100	max. 30 Nm	0.68 - 0.40
3/1 MH	7 - 66	max. 55 Nm	0.68 - 0.46
3/1 MG	7 - 66	max. 55 Nm	0.68 - 0.46

## General Description

The worm gears are developed to the latest degree in tooth construction technology and are manufactured and assembled under a high quality standard.

For the specific gears a sole plate is available for extra charge. The position of the lay-shaft may vary and may be advised upon request. The maximal allowed torque given in the chart equals an over-all level of efficiency of 1.

### In other terms:

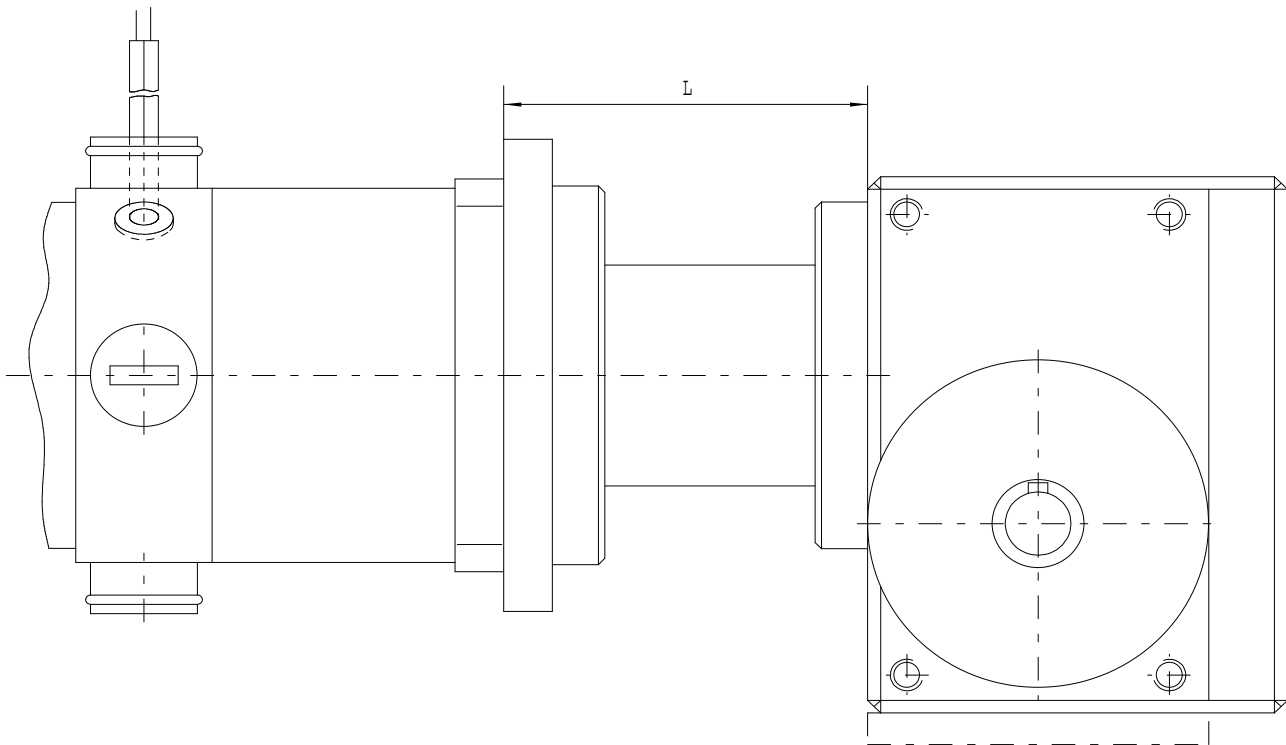
Mild shocks, 12-hour operation daily, up to 10 starts per hour, input speed 1500 rpm . The levels of efficiency should be regarded as median standard values. The optimal level of efficiency is reached after a certain running-in time.

## Technical Versions

The housing of the worm gear is made of aluminium. The cut worm gears are made of hardened steel. The bearing takes place by bearings of 2Z-version. The lubrication takes place by using grease or oil depending on size and model.

Technical modifications reserved

## Flange bell for motor mounting



Type	0/1 MH/MG	1/1 MH/MG	2/1 MH/MG	3/1 MH/MG
Dimension (Lenght in mm)	58	72	83	98

### Remark:

For the standard version the mounting of the motor to the worm gear takes place by the flange bell shown in the drawing above. For direct mounting of the motor to the worm gear please contact us.

Technical modifications reserved